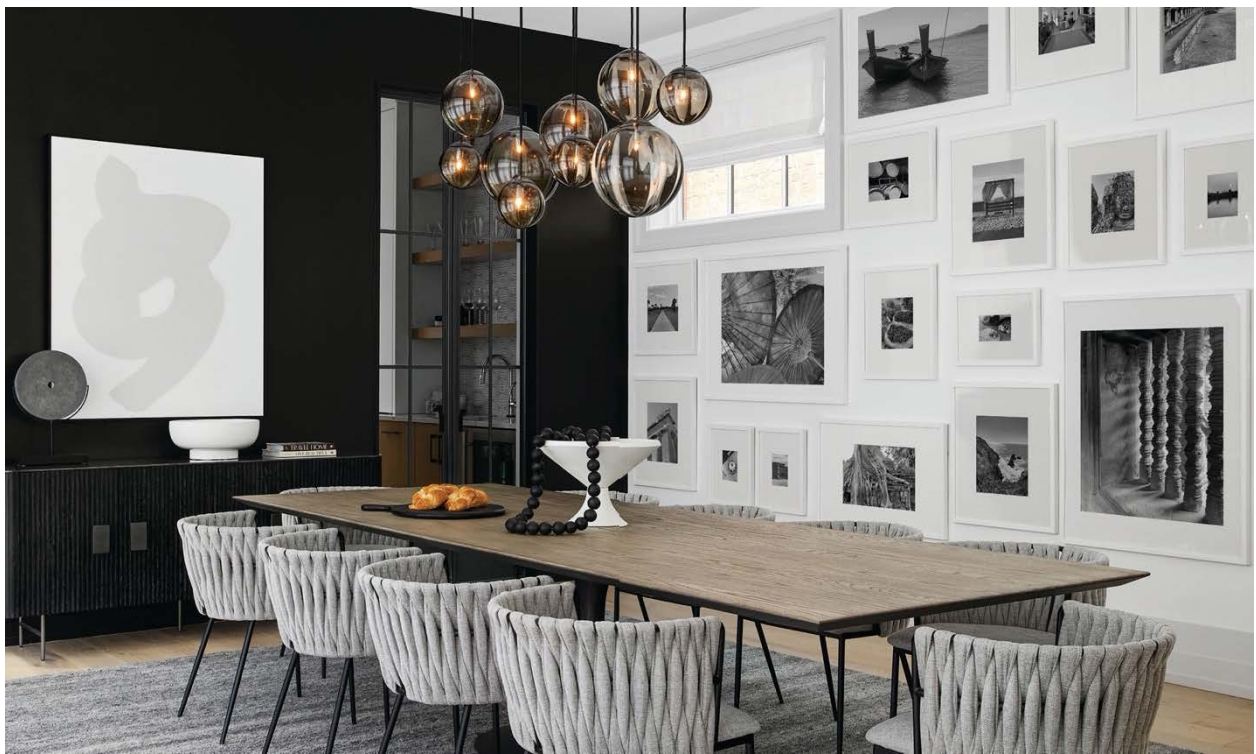


Devon Grace Interiors Transforms A Lincoln Park Property Into The Ultimate Luxury Family Home

By J.P. Anderson

Devon Grace Interiors thrillingly transforms a stripped-to-the-studs Lincoln Park property into the ultimate luxury family home.



The dining room is a visual feast, with sophisticated elements like a Puppet linear multi light pendant by Vistosi sourced at Lightology, Sarai dining armchairs in Belfast Heather Grey by Sunpan and Restoration Hardware Aero wood rectangular dining table.

THE CLIENT

Talk about a blank canvas: A couple discovered a gem of a home in Lincoln Park that was stripped down to the studs due to a prior flood and had loads of potential, but also needed lots of work. So, in March 2020—just as the world was going sideways—they called Devon Grace Interiors to tackle the task.



The cozy family room boasts a Radley sectional upholstered in Brentano Fabrics' Inlet pattern from the Clearwater collection sourced at Cisco Home; rugs by Restoration Hardware and One Kings Lane; and Corbett coffee table in Creamy Taupe and Murphy recliner in Inca Pewter, both by Four Hands.

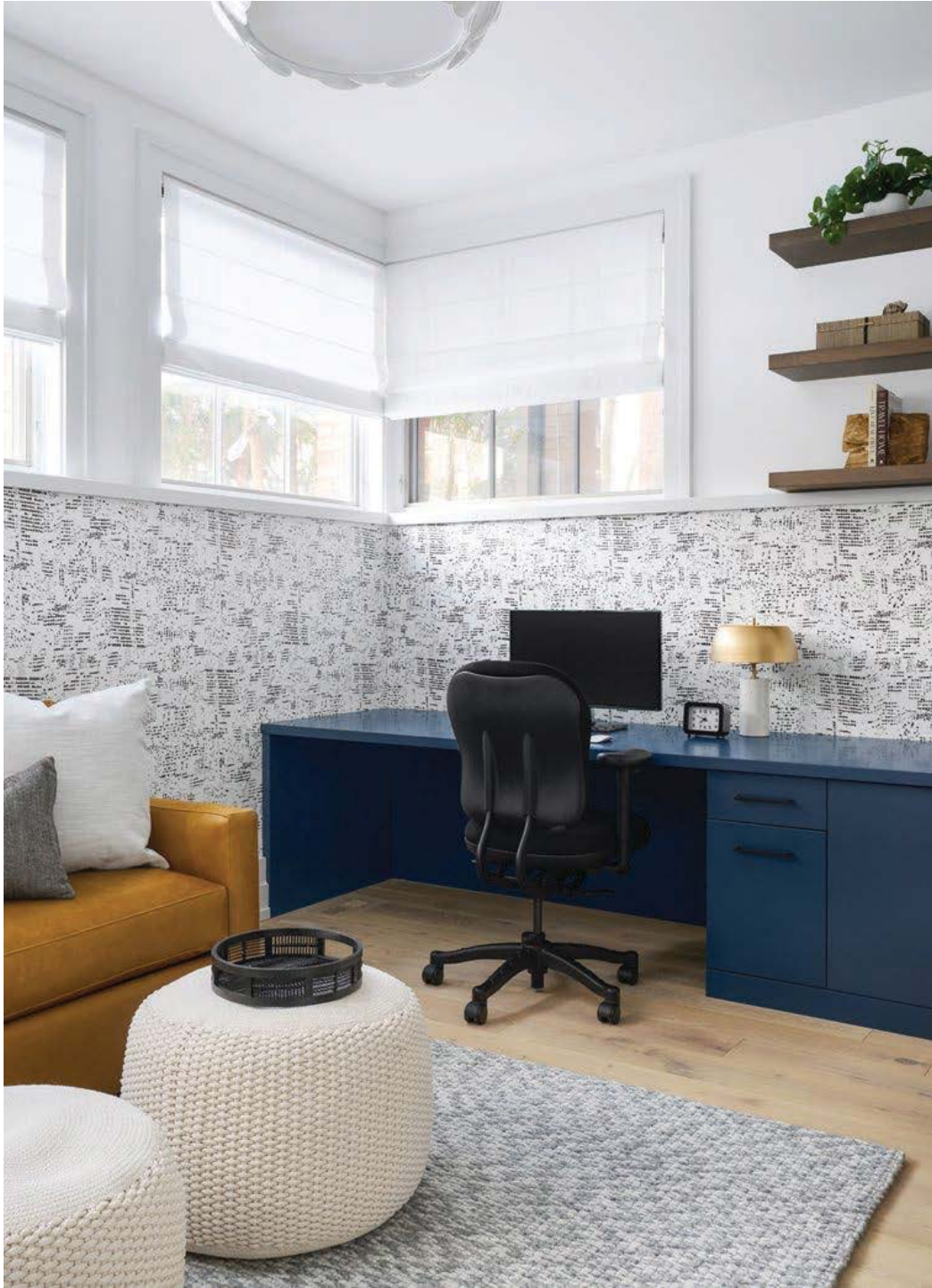
Notes DGI principal and owner Devon Wegman, “The home has incredible bones and a unique layout with a double-height foyer, a raised living room and an incredible courtyard that the house wraps around.” The home’s current state, she adds, “made the project even more fun because it was about as ‘blank slate’ as a renovation project can get. This one was special to our team right from the start.”



A trio of conical drum pendants by Rejuvenation frame the kitchen, which also features countertops and backsplash in striking DIFINITI Torano Evoke Plus quartz sourced from Euro Marble Supply.

THE PRIORITY

“Our clients have a young family and made it clear they wanted this to be the house they raise their kids in and live in for 30 years,” says Wegman.



In the home office, Midtown wallcovering sourced from Momentum Textiles & Wallcovering delivers a dose of pizzazz.

“We needed to think through the details thoroughly to ensure they would evolve with their lives and their changing needs. It was important to all of us that we chose a palette that was fresh and inviting and also classic enough that the materials would hold up over time. Rift-

cut white oak was used for all the cabinets to give a soft, warm look and allow them to stain or paint them in 15 years if they want a refresh. White oak floors with subtle gray knots in them again give a natural, soft look and create the perfect canvas for their home today and their home in 30 years.”



“Porcelain & Chalk” artwork sourced from Zoe Bios Creative adds visual interest to the kitchen’s dining area.

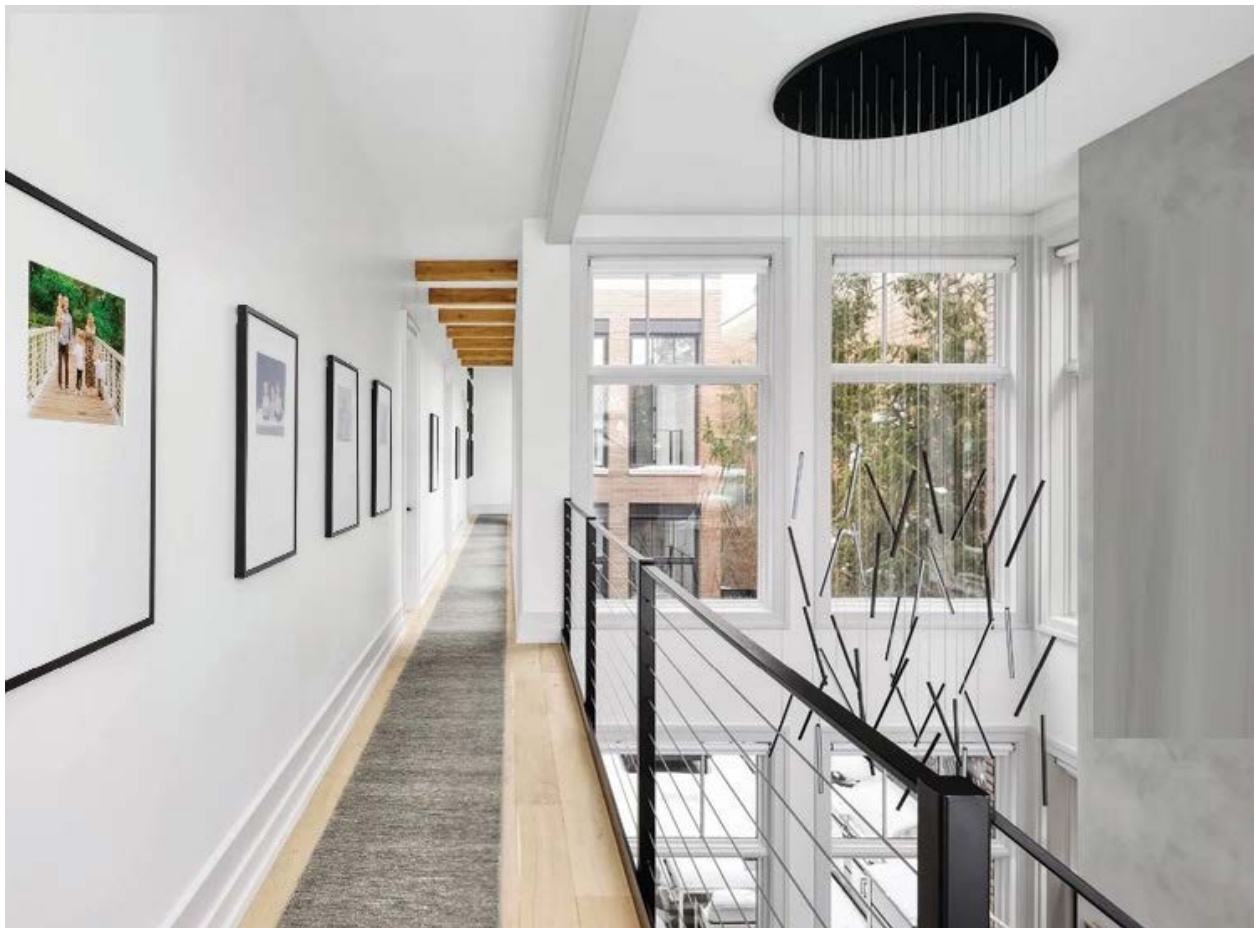
THE CHALLENGE

The pandemic presented immediate and obvious obstacles, but Wegman and DFI designers Kaitlin Hiestand and Bashany Garcia soldiered on and found success.



A Barclay free-standing tub from Studio41 and vanity cabinets from Custom Cabinet Source highlight the primary bathroom.

“We had to evolve our process a bit,” explains Wegman, “including presenting our designs virtually and dealing with supply chain issues throughout the life of this project. There are a ton of details and materials in a home of this size, and since construction is a chain of events, any delay in shipping or transit had a ripple effect on the project as a whole. Overall, considering the global events happening at the time, the project went smoothly and came together exactly as we all envisioned and hoped.”



A custom runner by Oscar Isberian Rugs and Chute multi light chandelier by Kuzco Lighting sourced at Lightology make the second-floor hallway someplace worth lingering.

THE DETAIL

“The area that is most dear to my heart is the kitchen,” enthuses Wegman. “In the city, kitchens are usually crowded and every square inch of space has to be utilized perfectly, but this kitchen had the room to really open up and become another space that people will want to hang out in.”



An eye-catching accent wall in Benjamin Moore's Blue Note adds pop to the primary bedroom, which also features a chaise from Four Hands and window coverings by Blinds Gallery.

THE OUTCOME

“Our clients were thrilled with the final results,” sums up Wegman. “After a year and a half living through the pandemic with three young kids, they were finally able to settle into their new home and reset. We wish we could work with them again, but know they’re going to be happily living in this space for a long time.”



The formal living room beckons with an inviting Wells tufted leather swivel armchair from Pottery Barn and a fireplace whose surround is decked with Bond Palladium light grey matte porcelain tile from Tilebar.

DESIGN DETAILS

TYPE

Single-family home

LOCATION

Lincoln Park

BUILDERS

Domain Construction

dxmain.com

INTERIOR DESIGN

Devon Grace Interiors

devongraceinteriors.com

MILLWORK

Custom Cabinet Source

customcabinetsource.com

RESOURCES

ANN SACKS

Shower floor tile

annsacks.com

BLINDS GALLERY

Various window coverings

blindsgallery.com

CHICAGO GLASS & MIRROR

Shower doors and various mirrors

chicagoglassandmirror.com

EURO MARBLE SUPPLY

Various countertops and backsplashes

euromarblesupply.com

FOUR HANDS

Various furniture and lighting

fourhands.com

LEGNO STUDIO

Flooring throughout

legnostudio.com

LIGHTOLOGY

Various lighting

lightology.com

RESTORATION HARDWARE

Various furniture and rugs

rh.com

STUDIO41

Primary bathroom tub

shopstudio41.com

SUNPAN

Various furniture and accessories

sunpan.com

TILEBAR

Various tile

tilebar.com

July 13, 2022

Photography by: Photographed by Dustin Halleck